

# REVOLUTION II WHITE

WOMEN'S: WHITE 28093 • SIZE: EU 35-42, UK 2.5-8



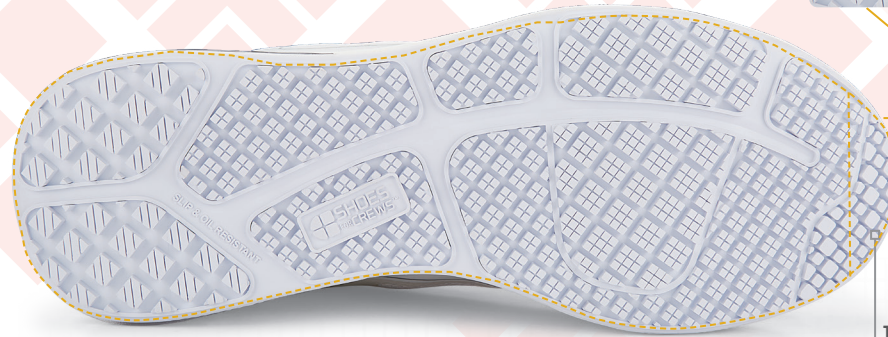
Weight  
(per shoe):  
320 grams

Midsole Material - EVA infused

WATER RESISTANT  
designed to  
repel water and  
keep your foot dry.



Superior  
SFC SLIP-RESISTANT  
outsole.



**SUPERIOR SFC SLIP RESISTANT OUTSOLE**

- Added depth for improved durability and wear time.
- Larger surface area covered by the outsole provides better slip-resistance.

TripGuard - Allows ease of movement between different surfaces

Removable  
EVA infused Insole



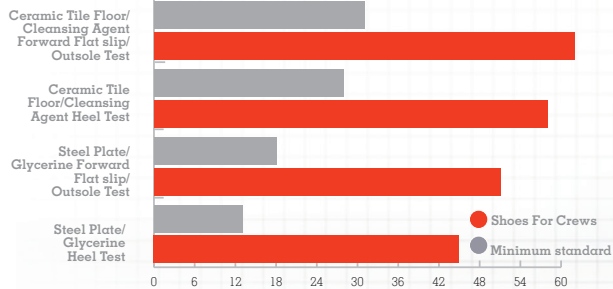
Padded collar

Padded tongue

Extra cushioning

Regulr fit

## SFC GREATLY EXCEEDS INDUSTRY STANDARDS



Slip Resistance Test EN ISO 13287:2012, performed by TUV Rheinland LGA Products GmbH in Leipzig, Germany during August 2018\* On a scale where 0.0 is the absence of friction and 1.0 is very high friction (e.g. dry carpet), SFC rated .63 - more than tripling the .18 minimum standard. All SFC shoes use the Shoes For Crews patented slip-resistant outsole. Product tested: BRIDGETOWN 28740

## REVOLUTION II- DATA GUIDE

Certification: N/A

Upper Material: Synthetic/  
Nylon mesh

Lining Material: Polyester

Midsole Material: EVA infused

Outsole Material: Rubber

Safety Toe Cap: N/A

COO: China