



In application of the Regulation (EU) 2016/425 of 9 March 2016 concerning the harmonization of the Member States legislation relative to personal protective equipment, Centexbel Notified body 0493 authorized by the FPS Economy (Federal Public Services) has issued the following:

## EU TYPE EXAMINATION CERTIFICATE

**Nr. 031/2020/0573**

**This EU Type examination certificate is valid until 23 Apr 2025**

to: **HAVEP, Goirle**  
for: **VP-01-BT2: Bodytrousers**

The personal protective equipment above mentioned satisfies the applicable essential safety requirements of the Regulation (EU) 2016/425.

For the argumentation, the following standards are used:

*EN ISO 13688:2013*                      *Protective clothing - General requirements*  
*EN ISO 20471:2013+A1:2016*      *High visibility clothing - Test methods and requirements*

This declaration applies to the equipment as submitted in the type testing and described in the manufacturer's technical documentation (As described in 2016/425 Annex III) that is registered with number 12129.

This certificate has been drawn up in accordance with the general certification regulation of Centexbel which is available via <https://www.centexbel.be>

Issued by Centexbel, Notified Body 0493, in Ghent, on 23 Apr 2020



Inge De Witte  
Certification Manager

Attached: 1 Annex

## ANNEX

EU TYPE EXAMINATION CERTIFICATE Nr. 031/2020/0573

### 1. Applicant

HAVEP  
Bergstraat 50  
5051 HC Goirle  
Netherlands

### 2. Description

EN ISO 20471:2013+A1:2016





### 3. Materials and accessories

#### Assembly

- D1S274N4/D001274 + D19056X3/D001156
- D1S274N4/D001274 + D19195X4/D001103
- D1S274N4/D001274 + D1S319BX/D001319

#### Contrast fabric inner

- D19056X3500/D001156 Black 500
- D19195X4500/D001103 Black 500
- D19276Z0550/D001106 White 550 (small pieces only)
- D19276Z0670/D001106 HV Yellow 670 (small pieces only)
- D1S319BX500/D001319 Black 500
- D1S3651X500/D001365 Black 500 (capuchon)
- D1S457AM270/D001457 Print 270

#### Fluorescent material

- D19108A4670/D001039 HV Yellow 670
- D1S001L1670/D001001 HV Yellow 670
- D1S005L1670/D001005 HV Yellow 670
- D1S164L1670/D001164 HV Yellow 670
- D1S274N4620/D001274 HV Orange 620
- D1S274N4670/D001274 HV Yellow 670
- D1S274N4720/D001274 HV Red 720
- D1S395YS620/D001395 HV Orange 620
- D1S395YS670/D001395 HV Yellow 670
- D1S397YT620/D001397 HV Orange 620
- D1S397YT670/D001397 HV Yellow 670
- D1S397YT720/D001397 HV Red 720
- D1S4098X670/D001409 HV Yellow 670 (only at the knees)
- D1S444V4620/D001444 HV Orange 620
- D1S444V4670/D001444 HV Yellow 670
- D1S454AM720/D001454 HV Red 720
- D1S467N1620/D002051 HV Orange 620
- D1S467N1670/D002051 HV Yellow 670
- D1S467N1720/D002051 HV Red 720

#### Reflective Tape

- FR263103/FR263101888B050
- FR263106
- FR263118/FR263118888B050
- FR263129/FR263129888B050
- FR263138/FR263128888B050
- FR263183/FR263183888B050
- FR263408/FR263132888B070
- FR263428/FR263428888B070

#### **CENTEXBEL • TEXTILE COMPETENCE CENTRE**

Technologiepark 70 • BE 9052 Gent • Belgium • phone +32 9 220 41 51 • fax +32 9 220 49 55 • gent@centexbel.be • www.centexbel.be

**VAT** • BE 0459.218.289 • **IBAN** • BE 44 2100 4729 6545 • **BIC** • GEBABEBB

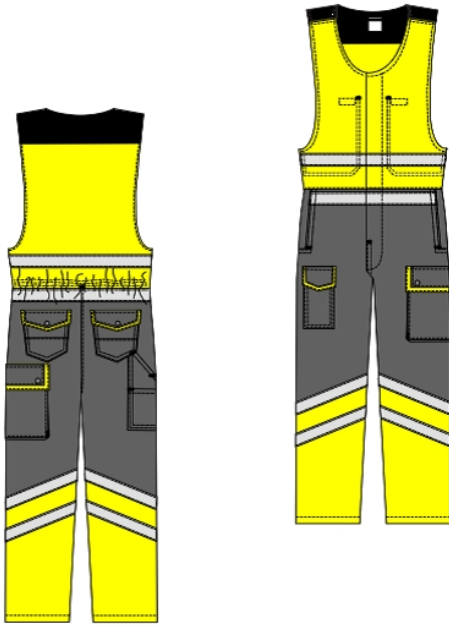


### Contrast fabric outer

- D08345L1100/D001003 Navy 100
- D08345L1170/D001003 Corn Blue 170
- D08345L1400/D001003 Bottle Green 400
- D08345L1700/D001003 Red 700
- D08520M2100/D001033 Navy 100
- D08520M2170/D001033 Corn Blue 170
- D08520M2500/D001033 Black 500
- D08520M2700/D001033 Red 700
- D19174X9100/D001059 Navy 100 (only at the knees)
- D19174X9500/D001059 Black 500 (only at the knees)
- D19174X9543/D001059 Grey 543 (only at the knees)
- D1S001L1543/D001001 Convoy 542
- D1S005L1101/D001005 Dark Denim 101
- D1S005L1700/D001005 Red 700
- D1S164L1400/D001164 Dark Green 405
- D1S164L1430/D001164 Spruce Green 430
- D1S164L1450/D001164 Apple Green 450
- D1S164L1520/D001164 Convoy 542
- D1S164L1656/D001164 Ocher Yellow 651
- D1S164L1700/D001164 Red 700
- D1S164L1730/D001164 Bordeaux 730
- D1S274N4100/D001274 Navy 100
- D1S274N4101/D001274 Dark Denim 101
- D1S274N4170/D001274 Corn Blue 170
- D1S274N4400/D001274 Bottle Green 400
- D1S274N4500/D001274 Black 500
- D1S274N4520/D001274 Charcoal 520
- D1S274N4543/D001274 Grey 543
- D1S274N4550/D001274 White 550
- D1S274N4700/D001274 Red 700
- D1S395YS100/D001395 Indigo Blue 106
- D1S395YS400/D001395 Bottle Green 400
- D1S395YS472/D001395 Forrester Green 472
- D1S395YS500/D001395 Black 500
- D1S395YS520/D001395 Charcoal 520
- D1S4098X543/D001409 Steel Grey 544 (only at the knees)
- D1S4109X542/D001410 Convoy 542 (only at the knees)
- D1S444V4100/D001444 Navy 100
- D1S444V4520/D001444 Charcoal 520
- D1S450M2400/D002033 Bottle Green 400
- D1S450M2520/D002033 Charcoal 520
- D1S450M2543/D002033 Grey 543
- D1S454AM240/D001454 Enamel 240
- D1S454AM701/D001454 New Empire Red 701

## Description/Picture of article

Article **VP-01-BT2: Bodytrousers**



The above picture is a general picture of the article. Possible variations of the above article can be present in the technical file.

Note :

Any modification in material, design, or other technical features must be brought to the attention of the Notified Body.